



Co-located with the NEW show



IN ASSOCIATION WITH



POST SHOW REPORT 2024

EXCEL LONDON | 23 – 24 April 2024

BOOK YOUR STAND FOR APRIL 8–9 2025



Sponsors & Partners

Content Partners



Workshop & Insight Partners



Workshop & Insight Partners



About The Watercooler & The Office

4127 professionals from the workplace culture, wellbeing, benefits and space communities came together **April 23-24 2024** to enjoy an expanded education programme from the industrys leading minds, innovative wellbeing champions and workplace design experts.

The **2 days** of networking, learning, inspiration and exposure to the industrys latest services and solutions make these events unrivalled in what they offer visitors and exhibitors alike.

#watercoolerevent #officeevent

watercoolerevent.com | theofficeevent.net





The Watercooler / The Office in Numbers

Pre-registered

5682

Attended

4127

Exhibitors

130

Speakers

120

Content Sessions

70



The best thing about the Watercooler event for our business was the level of real networking opportunities available through key decision-makers attending the event. We found the content and seminars to be very informative and valuable too. We will be back for the next exhibition in 2025.

2468
WORKPLACE
APPRECIATION

Rory Maguire,
Commercial Director,
2468 Group

#watercoolerevent #officeevent

watercoolerevent.com | theofficeevent.net

121 MEETINGS



For the 2024 shows we introduced a new offer for sponsors - **pre-booked meetings** scheduled with pre-registered visitors for the show.

Packages of 5 pre-booked meetings were on offer. This was limited to 10 sponsors in 2024 and trialled in tandem with the “Grip” **event matchmaking software** and event app.

Meetings took place on the show floor “Meetings Village”

The event team had a commitment of 5 meetings for 10 sponsors = **50 meetings**.

However a no limit was set and the final output from the show was:

Grip Event App at the show - Matchmaking, Networking & Planning tools integrated into the show app:

- More than **35000 networking actions** taken in the show app
- **6926 badge scans** made over 2 days
- **8124 sessions added** to schedules average 3.89 per active participant
- **14041 interested actions** received by exhibitors in the show app
- **784 meetings** received by exhibitors

SPONSORS

10

MINIMUM NUMBER OF MEETINGS
CONTRACTED TO DELIVER

50

MEETINGS SUCCESSFULLY
DELIVERED AT EVENT

78

MEETINGS ARRANGED
FOR POST EVENT

17

NO SHOWS BUT FULL
INTRODUCTIONS STILL MADE

36

#watercoolerevent #officeevent

watercoolerevent.com | theofficeevent.net

**For 2025 we will be offering x 10 pre-arranged meetings packages -
Book early to secure**

Contact francis@watercoolerevent.com



The shows use **LinkedIn as primary social media channel** to engage and inform target audiences.



LinkedIn Group
4000
followers

JOIN HERE



LinkedIn Group
4500
followers

JOIN HERE

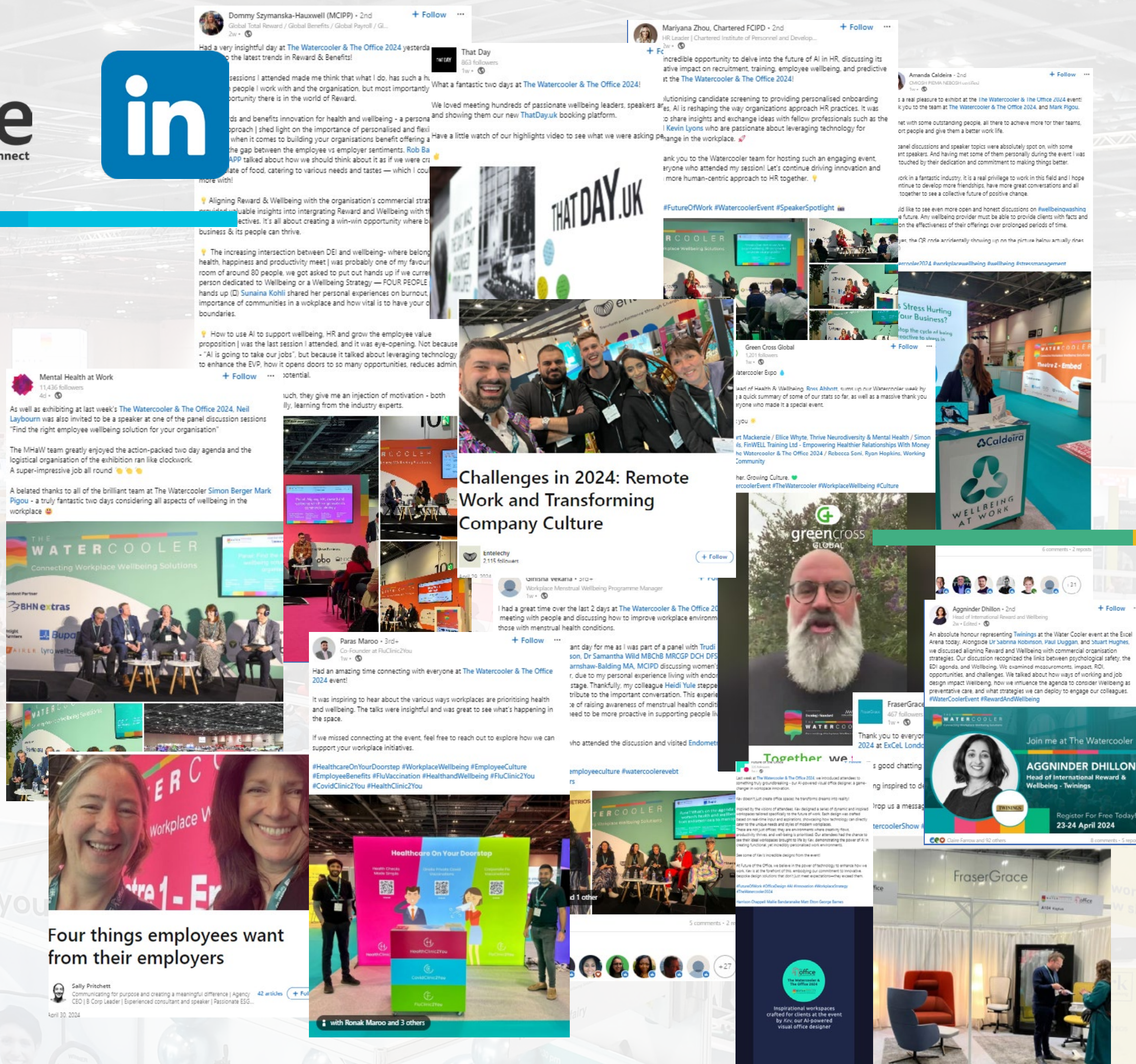
In the 75 days pre event 500,000+ impressions promoting the shows were measured on LinkedIn

In addition hundreds of comments, posts and reposts of show news, speakers and spnsors:

#watercoolerevent

#officeevent

watercoolerevent.com | theofficeevent.net





Is the Official B2B Media Partner for the shows



Speakers tell us what they're looking forward to at The Watercooler Event next week



Conversations around The Watercooler: 5 insights from Day 1 of the show



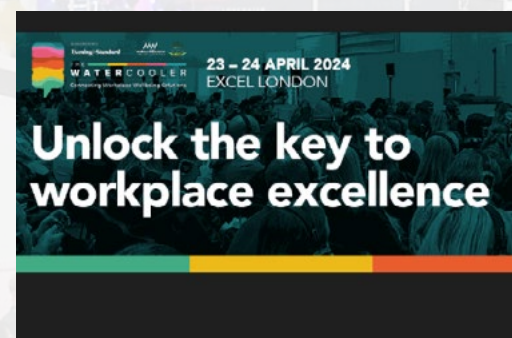
Watercooler Day 2: Key takeaways (powered by AI)



Watercooler hot topics: job design, measurement and the ethics of wellbeing



Why now is the perfect time for The Watercooler Event



Content, networking, launches and competitions at The Watercooler Event



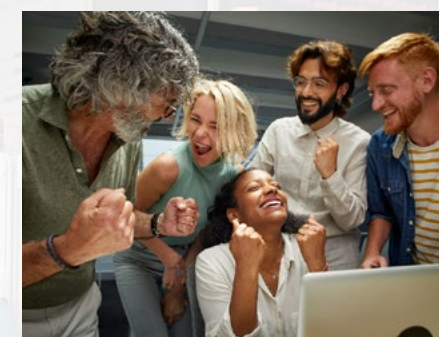
Leading voices tell us why now is the perfect time for The Office Event



5 Reasons why The Office is a must-attend event for all employers



The Office: key considerations for a workspace that promotes wellbeing



How do you get employees in a multicultural, multi-generational workforce to truly connect in the office?

#watercoolerevent #officeevent

watercoolerevent.com | theofficeevent.net

The leaders club is **free to join** by EMPLOYERS ONLY and currently hosts **over 500+ members** who are all driving the employee wellbeing agenda within their organisations.

Every year the MAD Leaders Club host private roundtables and lunches at The Watercooler / The Office - and members enjoy a private VIP Lounge on the show floor.

With membership **expected to pass 1000+ for the 2025** show now is the time to discuss sponsorship opportunities for the MAD Leaders Club

Visit the club at - <https://makeadifference.media/community/> - and talk to Claire Farrow about audience engagement opportunities - claire@makeadifference.events



Make a Difference is the leading digital media outlet for the employee wellbeing, benefits, culture and workplace sector it delivers a range of business development products for clients year round:

Webinars - average registration number 500

Newsletter advertising

Website advertising

Sponsored content

Email campaigns

Reports

to its **30,000 + UK readers** plus **over 15,000 readers overseas**.

For all editorial and advertising opportunities please contact Claire Farrow - claire@makeadifference.events



make a difference

workplace culture / mental health / wellbeing

#watercoolerevent

#officeevent

watercoolerevent.com | theofficeevent.net

KEY JOB TITLES AT THE SHOWS IN 2024

Academic Advisor	Communication and Engagement Manager	Director Trust and Safety Solutions	Global Head of Employee Health & wellbeing	Head of Global Workplace
Analyst	Communication Consultant	Director Workplace Experience & Real Estate	Global Head of Inclusion and Wellbeing	Head Of Growth
Architect	Community Lead	Director, Business & Society	Global Head of Wellbeing	Head of H&S and Wellbeing
Assistant Director HR	Compensation & Benefits Lead	Director, Clinical Operations	Global HR Business Partner	Head of Healthcare
Assistant Safety and Wellbeing Advisor	Compliance Director	Director, Head of DE&I	Global HRBP	Head of HR
Associate Director - Benefits	Consultant Occupational Physician	Director, Occupancy Planning & Management	Global Lead, Health and Well-being	Head of HR & Operations
Associate Director - Interior Design Practice leader	Consultant OH&Lifestyle Medicine	Director, People and Culture	Global Learning leader	Head of HR Central Services
Associate Director for Safeguarding	Consultant Psychiatrist	Director, People Business Partner EMEA	Global Mobility Manager	Head of HR Europe, DBS and Functions
Associate Director of Learning, Development & Wellbeing	Consultant Psychologist	Director, Workplace Experience	Global Pay & Reward Manager	Head of HR Projects, Organisational Development & Engagement
Associate Director of Operations and People	Contingent Worker People Partner	Diversity & Inclusion Director, International	Global Payroll and Reward Specialist	Head of Human Resources
Associate Director of Organisational Development	COO	Diversity & Inclusion Programme Partner	Global Real Estate Manager	Head of Inclusion & Employee Engagement
Associate HR Partner	Corporate Partnerships Manager	Diversity Equity and Inclusion Lead	Global Reward Manager	Head of Inclusion and Wellbeing
Associate Workplace Strategist	Corporate Real Estate Lead - EMEA & APAC	Diversity, Equity and Inclusion Programme Manager	Global Strategic Relationship Manager	Head of Industry Relations
Belonging & Employee Wellbeing Manager	Corporate Wellbeing CEO	EDI and Well-being Manager	Global Total Reward Director	Head of Integration
Benefits and Rewards Specialist	Corporate Wellbeing Nutrition	EDI Lead	Global Wellbeing & Engagement Manager	Head of Internal Comms and Culture
Benefits and Wellbeing Advisor	CPO	EDI Specialist	Global Wellbeing Lead	Head of International Healthcare Partnerships
Benefits Lead	Creative Director	Editor in Chief	Global Wellbeing Manager	Head of IT and Business Transformation
Benefits Specialist - EMEA	CTO	EMEA Head of Diversity & Inclusion & Wellbeing	Global Workplace EMEA & APAC	Head of Learning & Development
Benefits, Compensation & Wellbeing Specialist	Culture & Communications Manager	EMEA Payroll Manager	Group Director Workplace Consultancy & Transformation	Head of Learning, Organisational & Cultural Development
Benefits, Rewards & People Analytics Manager	Culture & Development Manager	Employee Benefits Manager	Group Finance Director	Head of Mental Health and Wellbeing
Building manager	Culture & Engagement Manager	Employee Engagement Director	Group Head of Property	Head of Mindfulness
Business and Operations Manager	Culture & Wellbeing Manager	Employee Experience & Engagement Program Manager	Group Head of Wellbeing	Head of Modern Workplace
Business Development Director	Culture, Employer Branding & Fleet Development Director	Employee Experience & Wellbeing Projects Lead	Group HR Business Partner	Head of Occupational Health & Wellbeing
Business Development Manager - Fit Out	Culture, Values & Wellbeing Specialist	Employee Experience Director	Group HR Director	Head of occupational health & wellbeing Delivery
Business Intelligence & Applications Manager	Customer Engagement Director	Employee Experience Lead	Group Managing Director	Head of OH and Wellbeing
Business Manager - Chief Property Office	Customer Insight Analyst	Employee Experience Partner - Inclusion & Wellbeing	Group People Director	Head of Organisation and HR Development
Business Manager - HR & PMO	D&I Manager	Employee Health and Wellbeing Manager	Group Reward & Benefits Manager	Head of Organisation Development
Business Partner, People & Culture	DEI & Wellbeing Lead	Employee Wellbeing Framework	Growth & Trading Director	Head of Partnerships and Wellbeing
Capability and Wellbeing Manager	DEI Consultant - EMEA	Employee Wellbeing Manager	Head Chief Development Office	Head of Payroll & Benefits
Careers and Employability Manager	DEI Director	Employer Engagement & Recruitment Officer	Head of APAC and EMEA Benefits	Head of Pension, Benefits & Wellbeing
Central Digital Workplace Senior Service Manager	DEI Lead	Engagement & Wellbeing Manager	Head of Benefits and Pension Operations	Head of People & Culture
CEO	Deputy Head of Culture	Engagement & Inclusion	Head of Benefits and Reward	Head of People & Engagement
CFO	Design Director	Engagement Culture & well-being global lead	Head of Benefits EMEA	Head of People & Talent
Change and People Development Lead	Development & Partnerships Manager	Engagement Lead	Head of Clinical Performance and Governance	Head of People Business Partnering & Operations
Channel Strategy Lead	Development Director	Environmental Health & Safety & Mental Health Coordinator UK & I	Head of Clinical Services	Head of People Experience and Culture
Channels & Partnerships Director	Director - Employee Benefits	Equality Diversity & Inclusion Manager	Head of Colleague Experience	Head of People Operations
Chief Commercial Officer	Director - Portfolio & Workplace Strategy	EU HR Director	Head of Communications and Engagement	Head of Primary Care
Chief Creative Officer	Director Health Solutions	Executive Director for People & Culture	Head of Competencies Development	Head of Programme Strategy
Chief Customer Officer	Director Human Sustainability	Facilities & Operations Manager	Head of Corporate Communications	Head of Property
Chief Delivery Officer	Director of Client Relations	Facilities & Workplace Manager	Head of Corporate Health Innovation	Head of Property & Facilities Operations
Chief Experience officer	Director of Client Technology Value	Facilities and Administration Manager	Head of Corporate Social Responsibility	Head of Property Services
Chief Financial & People Officer	Director of Culture & Engagement	Facilities Project Manager	Head of CRE Strategy and Services	Head of Purpose, Brand & Culture
Chief Happiness Officer	Director of Diversity	Facilities Supervisor	Head of Creative Diversity	Head of Real Estate & Workplace
Chief Medical Officer	Director of Facilities	Finance Controller	Head of Culture	Head of Resilience Division
Chief of Staff, Strategy Leader	Director of Global Facilities	Finance Director	Head of Delivery Modern Workplace	Head of Resource Management
Chief Operating Officer	Director of Health, Safety & Wellbeing	Financial Controller	Head of Design	Head of Revenue
Chief Operations Director	Director of HR & Transformation	Financial Wellbeing Director	Head of Domestic Abuse & Sexual Violence Prevention	Head of Reward and Global Mobility
Chief Operations Officer	Director of Insured Health Services	Fitness & Wellbeing Project Manager	Head of EDI	Head of Reward, Wellbeing & Organisational Design
Chief People & Operating Officer	Director of Medical Services	FM Soft Services Manager	Head of eLearning	Head of Staff Wellbeing
Chief People Officer	Director of People & Culture	Furniture & Workspace Consultant	Head of Employee Experience & Culture	Head of Standards
Chief Pricing & Underwriting Officer	Director of People & Operations	General Counsel	Head of Employee Health and Wellbeing	Head of Strategy and Lease Management
Chief Revenue Officer	Director of Reward	General Manager	Head of Employer Engagement	Head of Talent & Culture
Client Development Director	director of Reward, pensions & benefits	Global Benefits Lead	Head of Employer Services	Head of Talent Intelligence
Client Services Director	Director of Stakeholder Engagement	Global Capital Investment & Real Estate Initiatives Lead	Head of Engagement and Diversity	Head of Talent Management & Engagement
Clinical Innovation Lead	Director of Strategy & Operations	Global Communications and Engagement manager	Head of Equality, Diversity & Inclusion	Head of UK Employee Benefits
Coach and Learning and Development Lead	Director of Training and Development	Global Compensation Manager	Head of Facilities Management	Head of Wellbeing, Recognition & Communications
Colleague Experience Partner	Director of Wellbeing	Global DEI Director	Head of Finance & Resources	Head of Workplace and Wellbeing
Colleague Insights Manager	Director of workplace design space planning	Global Director, Talent & Orgnisational Effectiveness	Head of Financial Planning	Head of Workplace Mental Health & Training
Commercial Director	Director Organisational Development	Global Diversity Sourcing Specialist	Head of Financial Wellbeing	Head of Workplace Services & Business Management

KEY JOB TITLES AT THE SHOWS IN 2024

Head of Workplace Strategy
Head of Workplace Wellbeing
Head of Workspace
Health & Safety Manager
Health & Wellbeing Lead
Health and Wellbeing Business Partner
Health and Wellbeing Lead
Health and Wellbeing Manager
Health Hub Lead
Health Safety & Wellbeing Manager
Healthcare partnership Manager
HR & CSR Manager
HR & Office Manager
HR & Recruitment Manager
HR & Safeguarding Adviser
HR Advisor
HR and Development Administrator
HR and Operations Associate
HR Business Partner
HR Business Specialist
HR Change Lead
HR Director, EMEA
HR Generalist, EMEA
HR Lead
HR Lead - OD & Projects
HR Manager
HR Operations and Reward Senior Manager
HR Program Manager
HR Project Lead
HR Wellbeing Partner
HR, People & Culture Director
HR, Wellbeing Consultant & Coach
HRBP
Human Resources Advisor and Policy Lead
Human Resources Business Partner
Human Resources Director
IDE Change and Training Manager
Inclusion and Diversity Advisor
Inclusion and Wellbeing BP
Inclusion and Wellbeing Manager
Inclusion Diversity & Wellbeing Advisor
Int Wellness Program Manager
Interior Architect
Interior Designer
Intern Compensation & Benefits EMEA
Internal Comms &Engagement Lead
Internal Communications & Engagement Partner
Internal Communications Manager
International Affairs Manager
International HR Manager
International Partnerships Director
L&D Business Partner
L&D Facilitator
L&D Partner
Lead HRBP
Lead Standards Development Manager
Learning & Development Business Partner
Learning & Development Manager
Learning & Organisational Development Partner

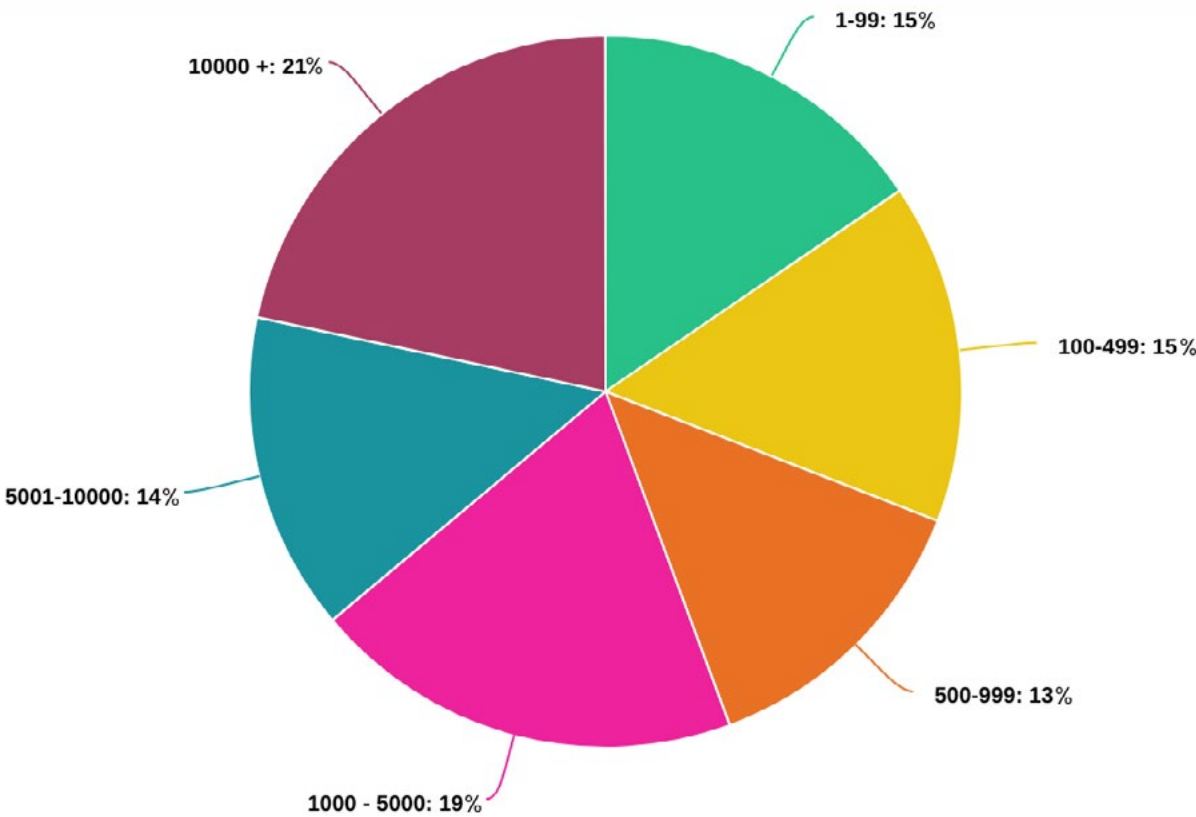
Learning and Development Manager
Learning Design Manager
Learning Director
Manager - Talent Consulting
Manager Workplace Mental Health
Manager- Employee Health Services
Manager, People & Culture
Managing Director and CEO
Managing Editor
Marketing & Employee benefits Director
Medical Director
Membership & Training Manager
Menopause Lead
Mental Health and Wellbeing Lead
Mental Wellbeing Lead
Meraki Global Workplace Lead
MHFA Instructor
National Facilities Manager
National Health and Wellbeing Manager
Neurodiversity Coach & Wellbeing Consultant
Nutrition Manager
Occupational Health & Wellbeing Manager
Occupational Health & Wellbeing Support
Occupational Health Advisor
Occupational Health and Wellbeing Lead
Occupational Health Business Support Co-ordinator
Occupational Health Manager
Occupational Health Physician
Occupational Wellbeing Lead
OD Advisor
OD Consultant
Office & Facilities Manager
Office 365 lead
Office and Facilities Manager
Office Manager & Head of Admin
Office Services & Facilities Manager
OH Manager
OHS Manager
Operational Climate Transition Lead
Operational Strategy Director
Operations Director
Organisational Development Advisor
Organisational Development Business Partner
Organisational Development Manager Wellbeing
Organisational Development Partner
Partnerships Director
Partner human capital consulting
Partnerships & Business Development Manager
Partnerships Director
Patient Engagement & Stakeholder Lead, London
Payroll & Benefits Analyst - Global
Pensions & Benefits Analyst
Pensions & International Benefits Advisor
Pensions Manager
People & Business Support Director
People & Change Manager
People & Culture Advisor
People & Culture Director

People & Culture Lead
People & Inclusion Manager
People & Organisation Director
People & Organisation, Compensation & Benefits Advisor
People & Talent Lead
People and Culture Advisor
People and OD Partner Wellbeing
People Business Partner
People Director
People Experience and Culture Manager
People Lead
People Operations Director
People Operations Manager
People Partner
People Process, Systems & Workplace Experience Manager
People Services Lead
Performance & Engagement Manager
Performance Analyst
People and Wellbeing Programme Manager
PR Director
Procurement Director
Product Director
Product, Propoistioin and Partner Consultant
Program Leader Social Sustainability & Wellbeing
Programme Manager for Health & Wellbeing London Region
Project Development & Services Manager
Project Manager - Health & Wellbeing
Project Manager - Real Estate
Project Manager People Development & Learning
Property Assurance Manager
Proposition and Product Director
Proposition Development Consultant
QSHE Manager
Quality & Innovation Manager
Real Estate Manager
Regional Culture Partner
Regional Diversity, Equity, Inclusion & Belonging Manager EMEA
Regional Education Manager
Regional Head of Safety & Security Europe & the Americas
Regional Head of Workplace
Regional HR Director
Regional Operations Manager
Regional Workforce Wellbeing Lead
Relationship Director
Relationship Strategist
Resident Experience Manager - Wellbeing
Responsible Business & Inclusion Manager
Retail Wellness & Engagement Specialist
Reward & Wellbeing Manager
Reward and Benefits Analyst
Reward Director
Reward Lead
Reward Manager
Reward Systems Manager
Safety, Health & Wellbeing Business Partner
Sales & Consulting Analyst
Sales & Marketing Director
Segment Marketing Manager - Workplace
Senior Analyst Compensation & Benefits

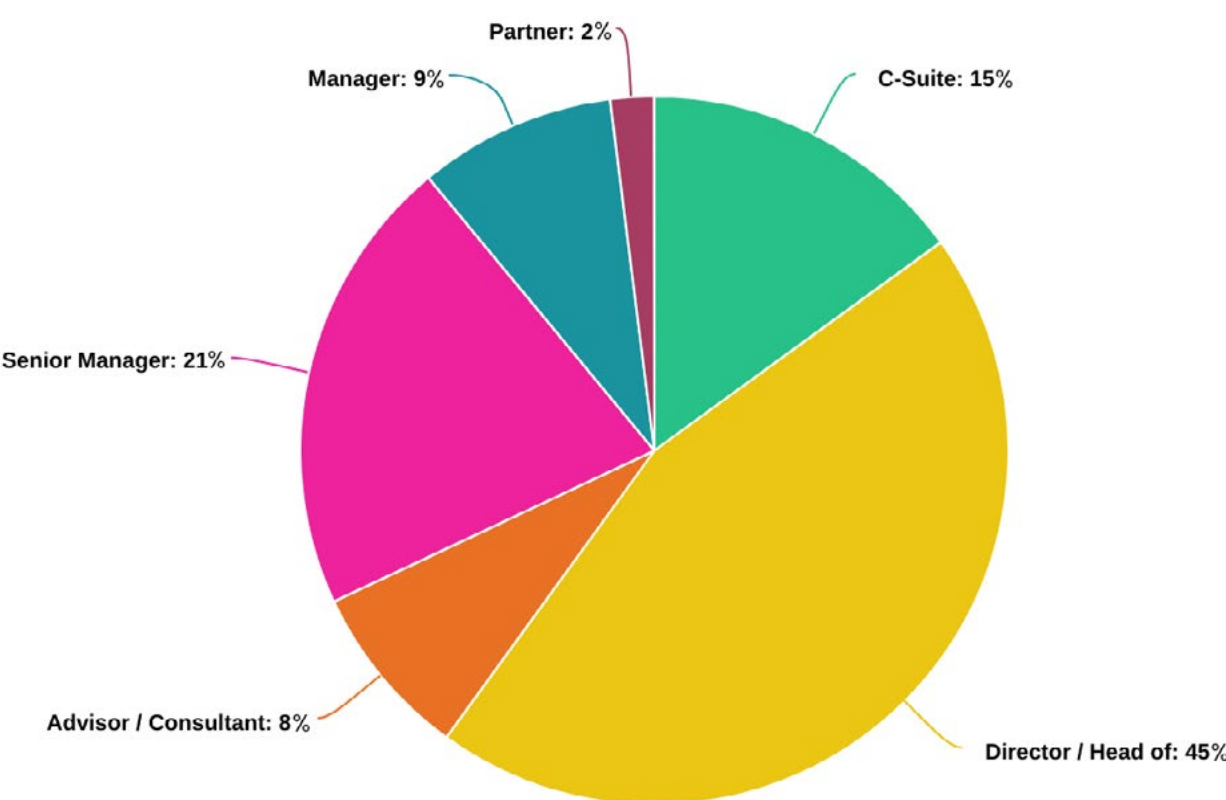
Senior Benefits Lead
Senior Business Development Manager
Senior Communications Specialist
Senior Corporate Responsibility Manager
Senior Customer and Systems Officer
Senior Designer
Senior Director - People Care & Employee Services
Senior Director Workplace & Global Corporate Security
Senior Director, Human Resources
Senior Director, People & Culture
Senior Global Benefits Partner
Senior Global Comms & Engagement Manager
Senior H&S manager
Senior HR Business Partner
Senior HR Director
Senior HR Generalist
Senior HR Projects Office
Senior Interior Designer
Senior Internal Communications Manager
Senior L&D Trainer
Senior Manager - Estates & Facilities
Senior Manager EMEA Benefits
Senior Manager Global Learning and Development
Senior Manager Real Estate & Workplace APAC & EMEA
Senior Manager, EMEA Corporate HR
Senior Manager, Internal Communications
Senior Manager, Operations
Senior Manager, Regional Facilities UK, Southern Europe & Africa
Senior Manager, Talent Development
Senior Mental Health and Wellbeing Manager
Senior Occupational Health Adviser
Senior Partnership Manager
Senior People & Practices Manager
Senior People Partner
Senior Proposition Manager
Senior Reward and Wellbeing Officer
Senior Risk Culture & Engagement Manager
Senior Solutions Product Manager
Senior Specialist, Global Wellbeing
Senior Talent Partner & D&I Lead
Senior Wellbeing & Employee Experience Manager
Senior Workplace Manager, EMEA
Senior Workplace Services Manager
Senior Workplace Strategist & Change Manager
SHEQ Manager
Site Operations & HSE Director
Social Value Director & Mental Health Ally
Sr Director, People & Culture, EMEA
Sr Lead - P&C Vendor Management
Sr Program Manager, Global Wellbeing
Staff Engagement, Wellbeing & Inclusion Advisor
Staff Wellbeing & Engagement Partner
Staff Wellbeing Adviser
Strategic Development Director
Strategic Development Specialist Inclusion, Diversity & Wellbeing
Strategic Partnerships Director
Strategy Operations Lead
SVP Total Rewards and People Operations

Talent Acquisition & Retention Manager
Talent Business Partner
Talent Development Manager
Talent Management & Organisational Development Analyst
Training & Development Senior Specialist
UK & I Wellbeing Engagement & Communication Specialist
UK Facilities Manager
UK Health & Wellbeing Lead
UK Workplace Manager
UKI Head of Wellbeing
Vice President, Insurance & Alliances
VP Culture and Change
VP Employee Experience
VP Global wellbeing
VP Growth
VP, Corporate Services
VP, EDI
VP, HR
Well-being Engagement Manager
Wellbeing & Benefits Advisor
Wellbeing & Customer Experience Operations Manager
Wellbeing & EDI Lead
Wellbeing & Engagement Business Partner
Wellbeing & Engagement Lead
Wellbeing & Engagement Manager
Wellbeing & Inclusion Lead
Wellbeing & Inclusion Partner
Wellbeing & Performance Lead
Wellbeing and Engagement
Wellbeing and Inclusion manager
Wellbeing Community Manager
Wellbeing Director
Wellbeing Health Proposition Manager
Wellbeing Partner
Wellbeing Product Manager
Wellbeing Services Lead
Wellbeing, Culture & Engagement SM
Wellbeing, Inclusion & Engagement Lead
Wellbeing, Teams and Social Director
Wellness and Engagement Consultant
Workplace advisory and Change Management Director
Workplace architect
Workplace Culture and leadership lead
Workplace Director
Workplace Engagement Manager
Workplace Experience Director
Workplace Experience Lead
Workplace Health and Wellbeing Lead
Workplace Operations Manager
Workplace Partnerships Lead
Workplace Recruitment Director
Workplace Services Manager
Workplace Strategist
Workplace Strategy & Development Manager
Workplace Wellbeing business development lead
Workplace Wellbeing Expert
Workplace Wellbeing Strategist

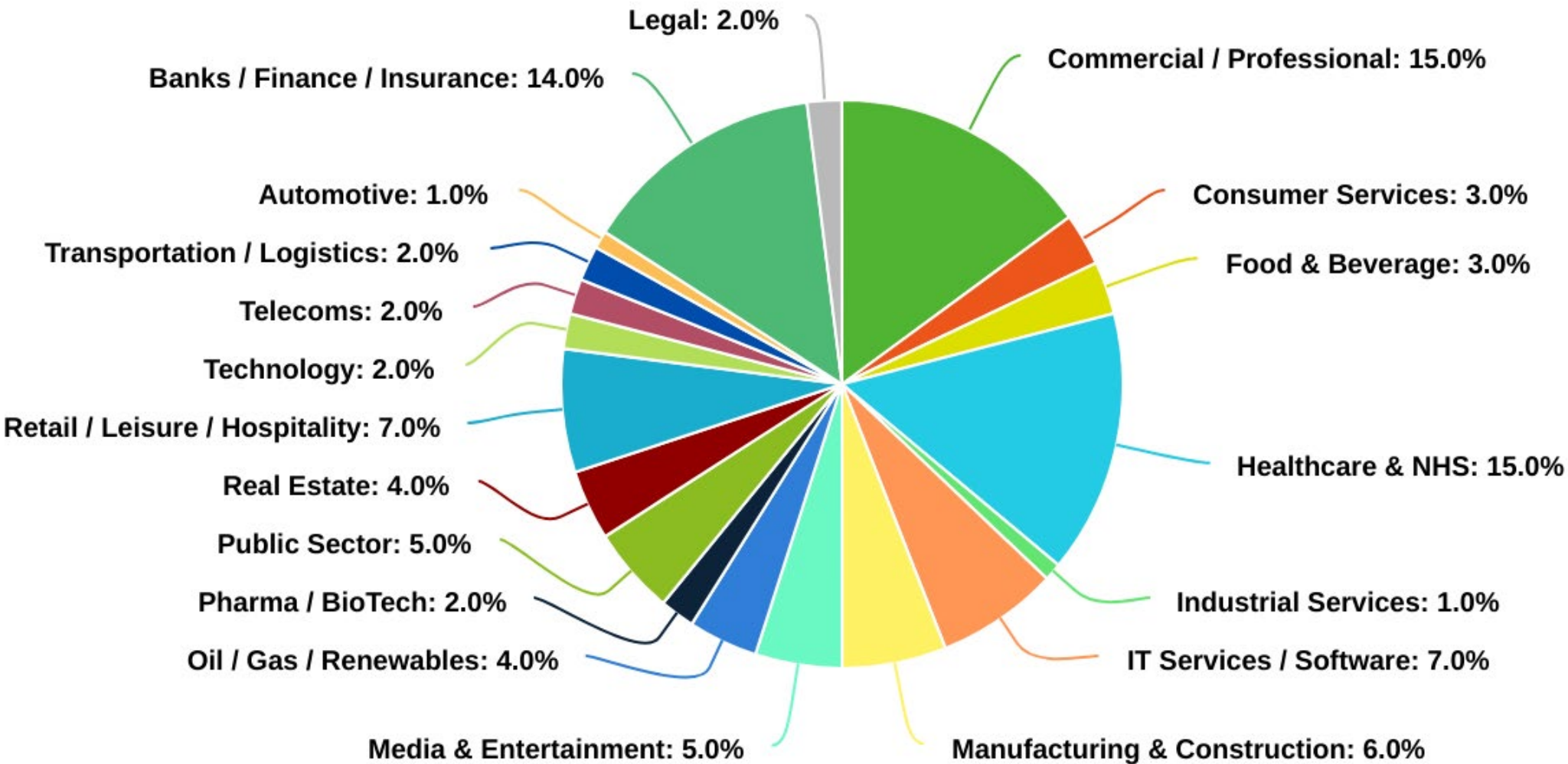
Number of Employees



Audience Role Types



Industry Sectors



EVENT FEEDBACK

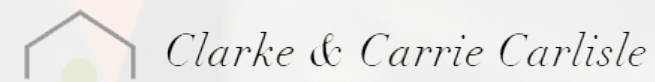
Sounds silly, but acknowledgement is a core value of ours, and you have repeatedly acknowledged our efforts and contributions, we truly appreciate it!

So much has been achieved, and it always opens the door to so much more!

Congratulations to the team, another fantastic event that (unfortunately) raises expectation for next year!

God bless!

Clarke & Carrie Carlisle



A genuinely inspiring event which left me full of new ideas and where I met numerous new useful contacts

Ben Channon, Architect and Author of "Happy by Design: A Guide to Architecture and Mental Wellbeing"

We were thrilled to take part in the office fair, advocating for the idea of how color enhances wellbeing and fosters togetherness in the workplace.



Valerie Corcias, Co- Founders
Mycoocoon & brainbo, **Mycoocoon**

What a relevant and brilliant show to attend. Each year they target the hot topics in the office and employee experience field that will let attendees go back to their organisation armed with ideas and new support to support an actionable change!



Maud Santamaria, Workspace
Director, **GWI**

An energising event brimming with workplace experts spanning wellbeing, HR, culture, DE&I, mental health, facilities management, workspace design and more, discussing the latest topics around workplace health wellbeing and culture.

Ed Warner MBE,
Co-Founder and
CEO, **Motionspot**

Motionspot

#watercoolerevent **#officeevent**

watercoolerevent.com | theofficeevent.net

EVENT FEEDBACK

The Office X The Watercooler provided an exceptional platform for connecting professionals from various industries who share a passion for workplace well-being. The event not only facilitated meaningful conversations but also served as a catalyst for spreading the word about the power of plants in the office for enhancing employee well-being and productivity.

Through engaging discussions and by showcasing our planted creations across the venue, we were able to showcase the many benefits of incorporating plants into office settings - from improving air quality to reducing stress and boosting creativity, the positive impact of plants on workplace culture is undeniable.

We are grateful for the opportunity to participate in such a valuable event and send a special thank you to the organisers for their dedication to promoting well-being in the workplace. We look forward to future events



Adrian Byne,
Benholm Group

#watercoolerevent #officeevent

watercoolerevent.com | theofficeevent.net

Green Cross Global: A Resounding Success at The Watercooler Event

Green Cross Global's participation at The Watercooler Event at ExCel London was a massive success.

From the moment we arrived, the organisation was impeccable. The entire event ran smoothly, allowing us to maximise our interactions with attendees and fellow exhibitors.

The caliber of visitors at The Watercooler Event was exceptional. We had in-depth conversations with a wide range of individuals genuinely interested in improving workplace culture and employee wellbeing. It was inspiring to connect with so many like-minded professionals all under one roof.

The atmosphere at the event fostered a strong sense of collaboration. We had insightful discussions with fellow exhibitors, forging valuable connections that will undoubtedly lead to future partnerships.

Overall, Green Cross Global's experience at The Watercooler Event was tremendously positive. The amazing interactions, the excellent organisations, and the opportunity to connect with like-minded professionals solidified the event's value.

We look forward to participating again next year!



Ross Abbott,
Head of Health
and Wellbeing

What an incredible time we had at The Watercooler & The Office 2024! It was fantastic to engage with so many thought leaders and professionals passionate about the future of workplace wellbeing and HR.

The discussions on future ways of working resonated deeply with our mission at Future of the Office. Thought leaders emphasised the need for emotional connections at work, inclusivity in hybrid models, and leadership in managing flexible work environments. Our approach champions these very elements by designing spaces that foster connectivity, adapt to diverse workforce needs, and support leadership in navigating new working landscapes.

See you all next year for more insights and innovations from Future of the Office!



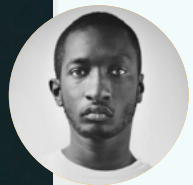
EVENT FEEDBACK



My brain is feeling rather full after a day of thought-provoking and engaging sessions at The Watercooler & The Office 2024 event! I could list out pages of insights which I always think is a sign of a great learning event! Thanks to the organisers and the speakers!

TWININGS

Beth Burton,
Wellbeing Lead, **Twinnings**



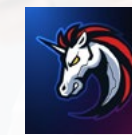
Two Black men, both with disabilities, on stage, discussing well-being in the workplace? Yep, that happened! The whole day opened numerous insightful reflections and highlighted the need for more conversations.



Speaker: Isaac Harvey,
President,
Wheels and Wheelchairs



A huge thank you to The Watercooler team for hosting such an engaging event, and to everyone who attended my session! Let's continue driving innovation and creating a more human-centric approach to HR together.



Speaker: Mariyana Zhou,
Head of HR, **1inch Network**



Special thanks to Simon Berger, Mark Pigou, Claire Knott, Claire Farrow and all the team for creating such an important wellbeing event.

Speaker: Jon Salmon, Consultant, Digital Director & Mental Health Advocate



A hive of great minds coming together to discuss best practice and the future of workplace wellbeing. Lots of takeaways.



Claire Wilkinson, HR Lead,
Wellbeing & Functions, **AECOM**



We loved running a roundtable at the Leaders Lunch - what a privilege to problem solve with organisational leaders delivering fantastic strategies.



Sarah Restall, Smart About Health



The highlight of the day was surely to be chairing a panel on Women's Health in the Workplace. We had a "full house" with questions from the floor! It really was a day of connections and laughter



Trudi Roscouet, Menopause
& Wellbeing Coach, **Vitality40plus**



Reactive to Proactive....Amazing time at The Watercooler Event - thank you to Mark Pigou and team as well as knowledgeable speakers who shared their wisdom.



Cecile Trijssenaar, Founder,
Stories for Wellbeing



Catching my breath after a week full of inspiration... Now to get the head down again & crack back on putting the learning into action



Speaker: Jamie Broadley, Group
Head of Health & Wellbeing, **Serco**

#watercoolerevent #officeevent

watercoolerevent.com | theofficeevent.net

**A Healthier
Workplace**

THANK YOU TO 2024 SPONSORS



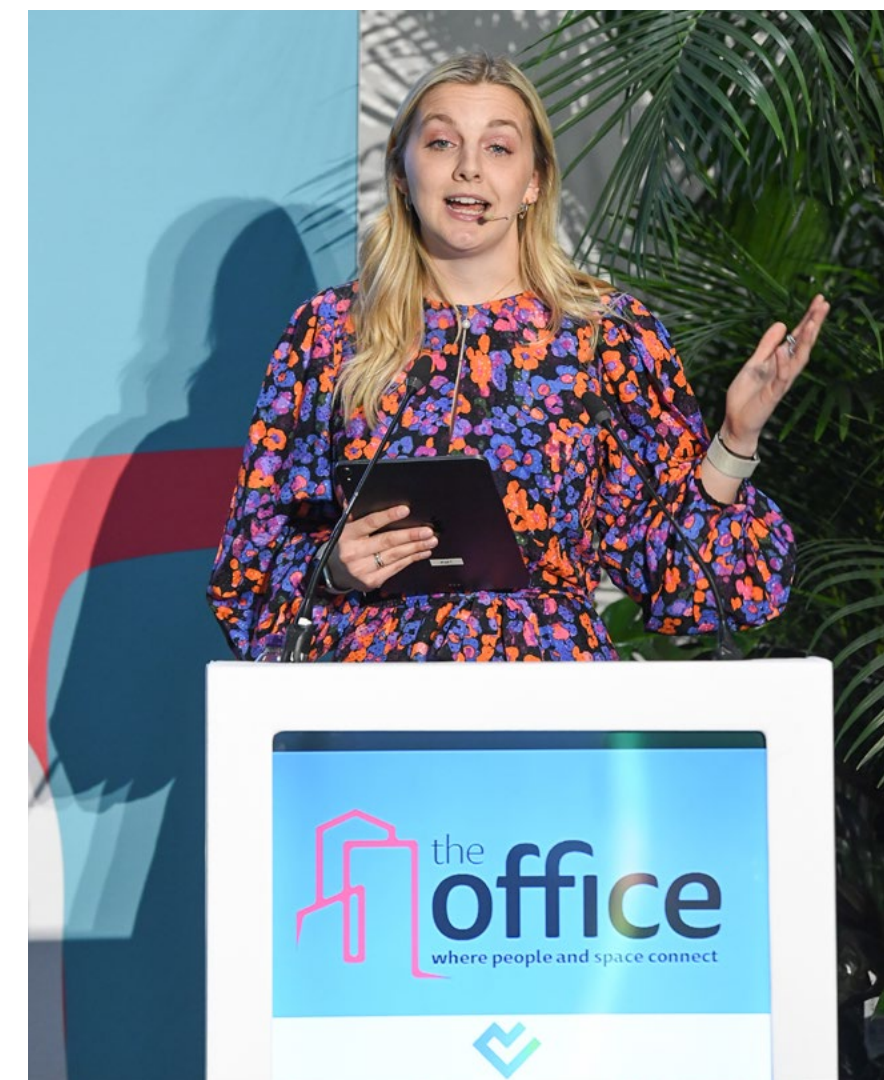
Content Partners



Workshop & Insight Partners



Workshop & Insight Partners



#watercoolerevent

#officeevent

watercoolerevent.com | theofficeevent.net

To discuss sponsorship opportunities for 2025 email
Francis Barham, Event Director - francis@watercoolerevent.com



THE
WATER COOLER
Connecting Workplace Wellbeing Solutions

Co-located with the NEW show



IN ASSOCIATION WITH

Evening Standard



EXCEL LONDON | **8 – 9 April 2025**

SEE YOU THERE!

www.watercoolerevent.com

SPONSORSHIP & EXHIBITION OPPORTUNITIES

Francis Barham, Event Director

Phone: 07590 717430

francis@watercoolerevent.com

#watercoolerevent #officeevent

watercoolerevent.com | theofficeevent.net